

Violent Crime Reduction using LPRs

Issues, answers, and challenges

September 18, 2024



This material was supported by Grant No. 15PBJA-23-GK-05525-RURA awarded by the Bureau of Justice Assistance (BJA). BJA is a component of the U.S. Department of Justice Programs. Points of view or opinions contained herein do not necessarily represent the official position or policies of the U.S. Department of Justice.

Introductions:



Asst. Chief (Ret.) Mike Beller
Chamblee PD, GA



Mike Green, Former DA,
Monroe County, NY



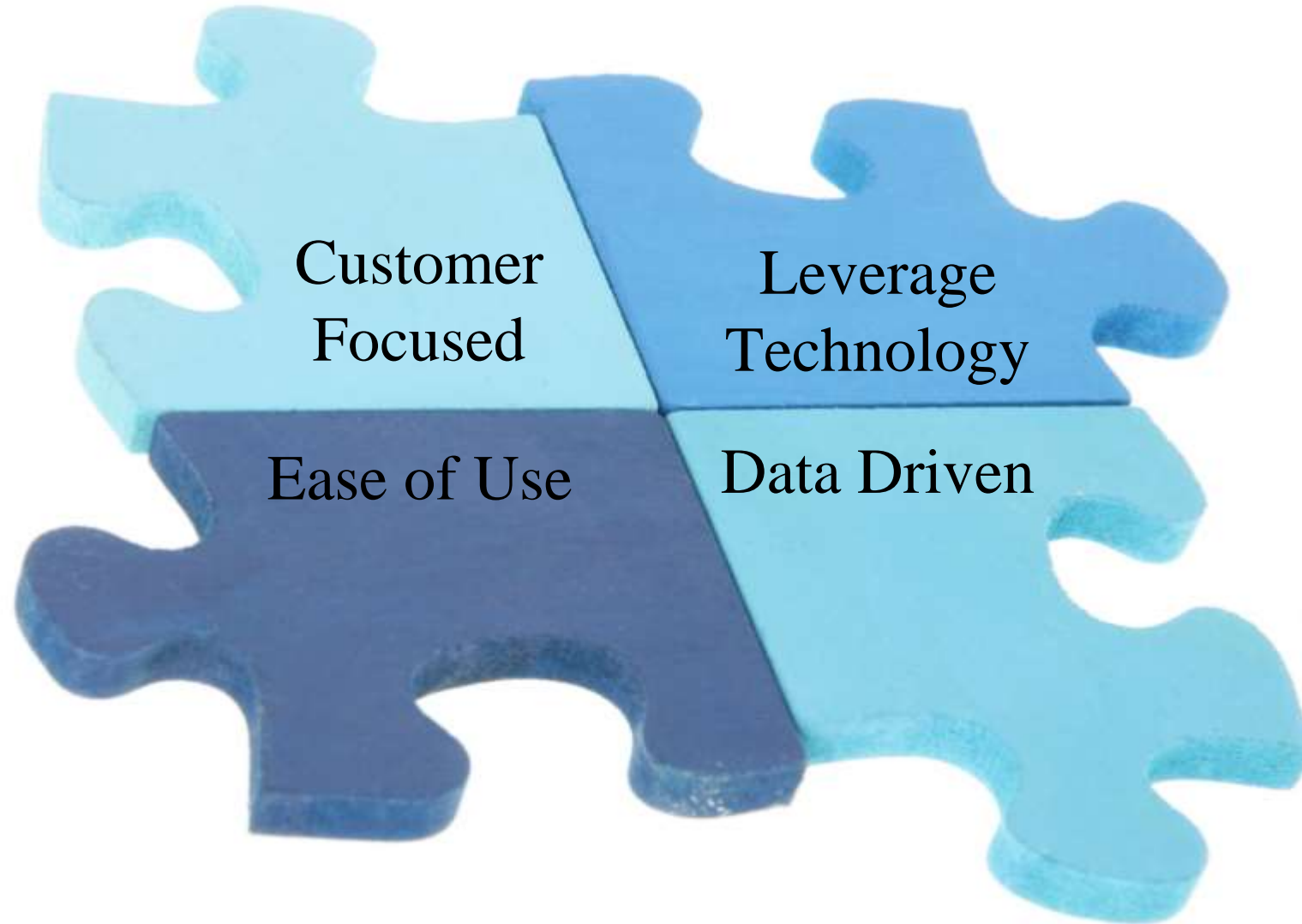
Robert Haas, Former Commissioner,
Cambridge (MA) PD



Justice & Security Strategies, Inc.

Moving Organizations Forward

SRT VCR Micro-Grant Principles



Overview

What is an LPR?

Concerns regarding LPRs

Questions for Vendors

Using LPRs

Case Study



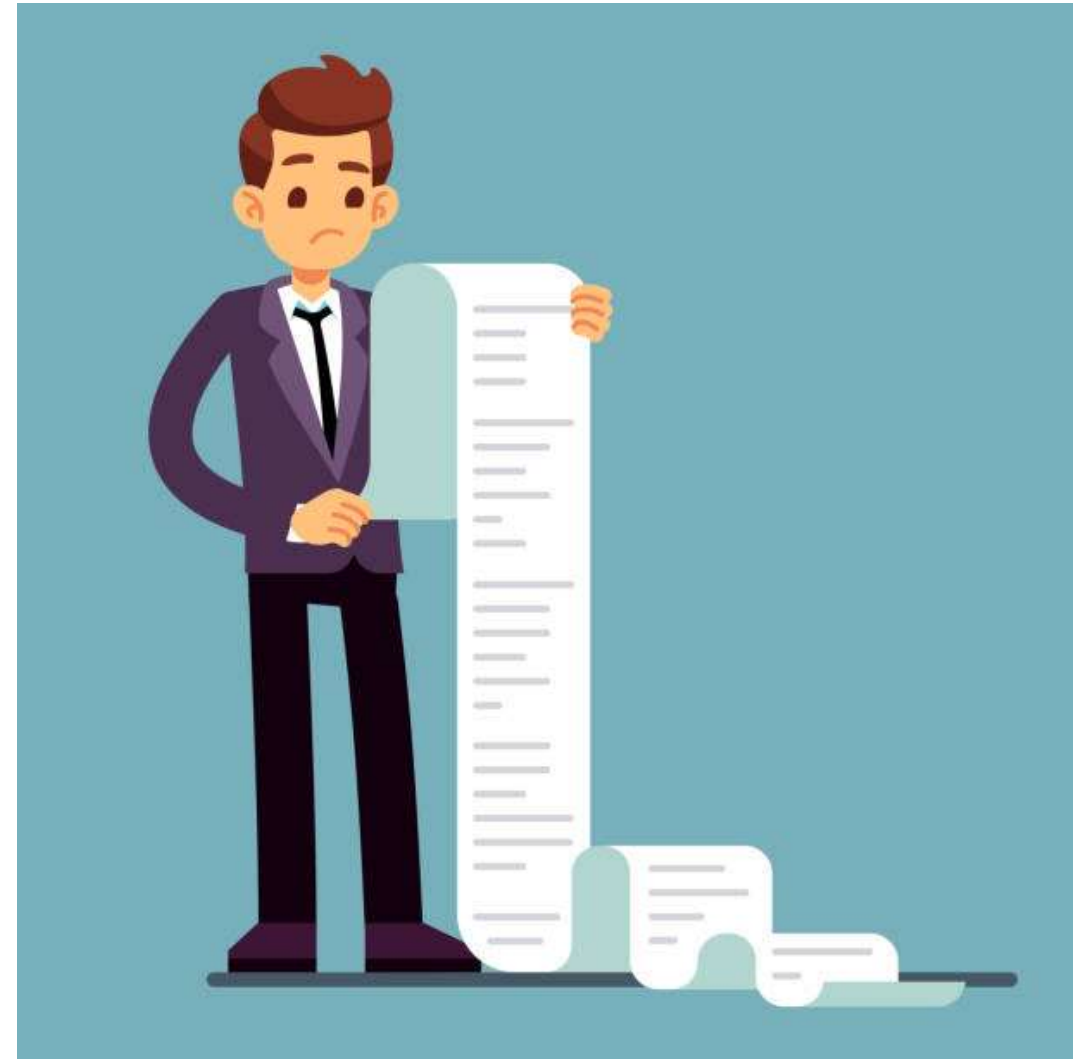
What is an LPR?

- An LPR (or ALPR) is a device that reads license plates.
- Vehicle mounted or stationary
- Triggered by motion or uses Optical Character Recognition (OCR) to scan for tags



What is an LPR?

Imagine a person on the side of the road, taking pictures of vehicles as they pass and then comparing the license plates in those images against a list of all the stolen cars, missing persons, wanted persons etc.





Law Enforcement Use of LPR

Investigative Applications

- Producing Investigative Leads
- Facilitating crime scene analysis
- Identifying suspects
- Facilitating interrogation
- Corroboration of victim/witness statements
- Integration of other technologies

Protection, Preservation & Retention



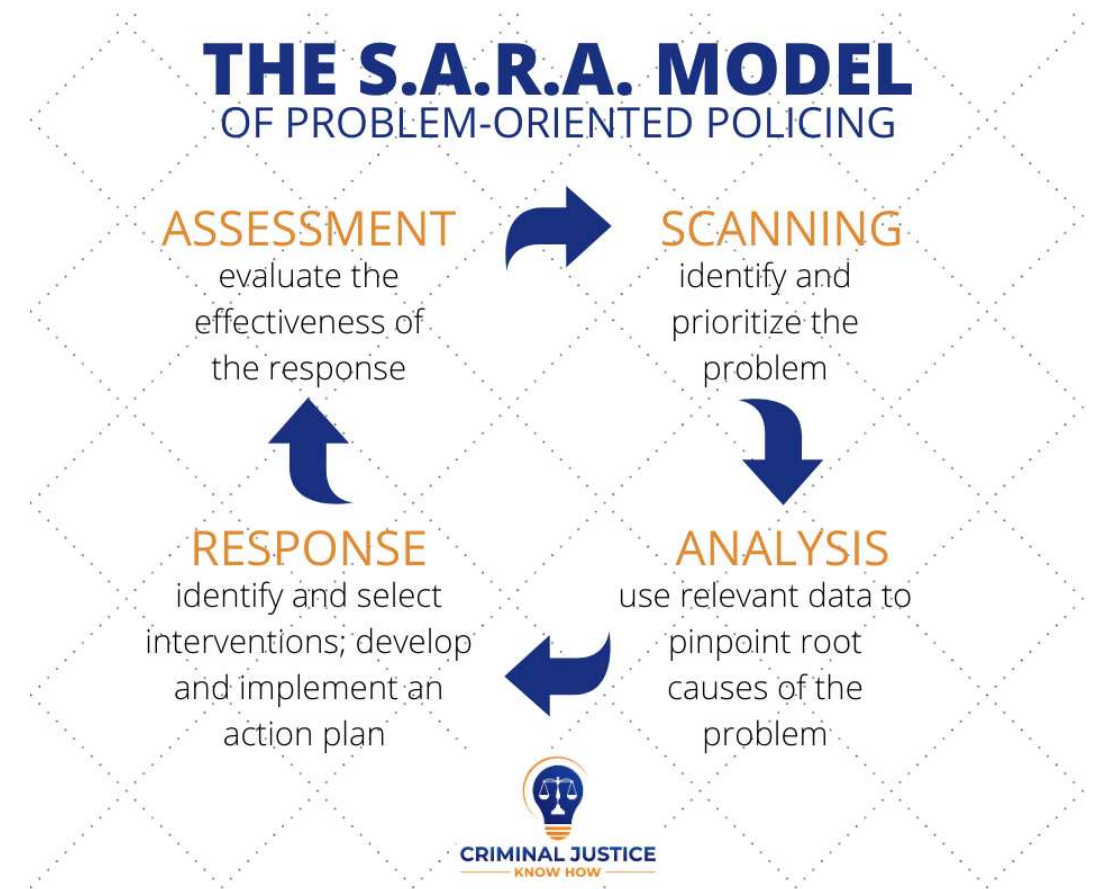
Data Retention

Security

Auditing, Data
Collection,
and Reporting

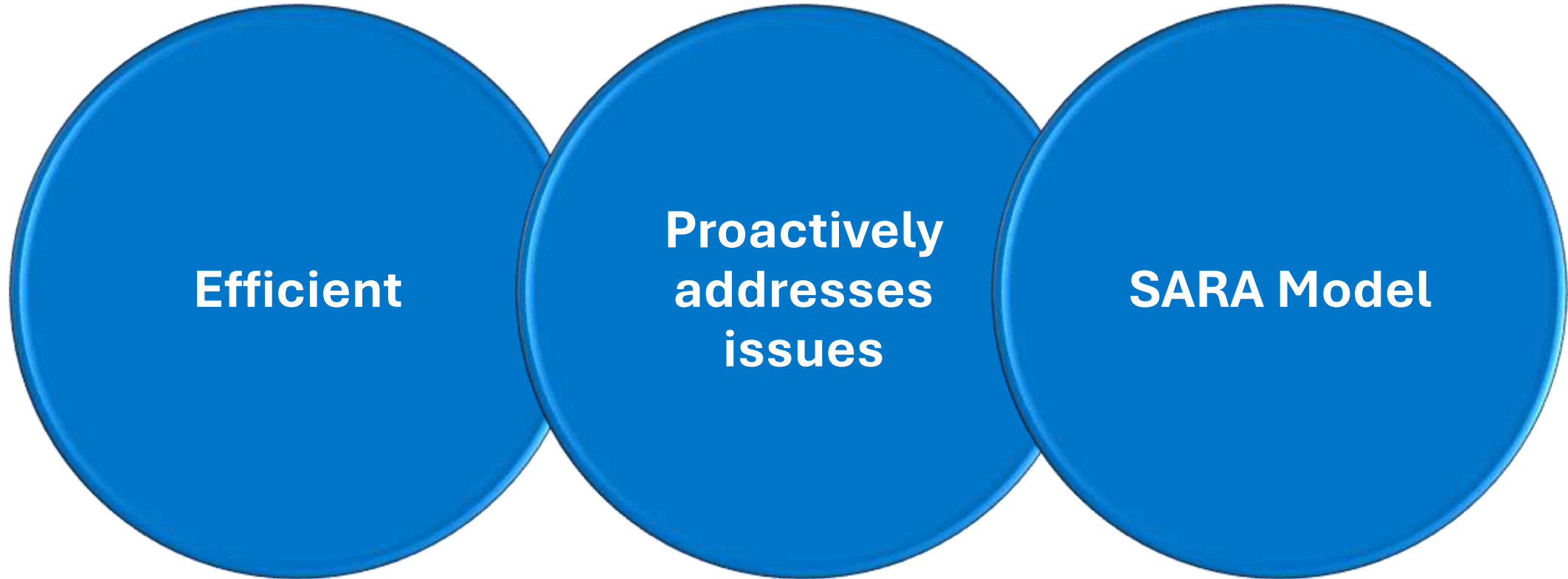
SARA Process

- Scanning-identified pursuit problem
- Analysis- decided to change tactics
- Response-Trained trainers and then officers
- Assessment-Continually updated tactics and training





Why LPR?



Why LPR?

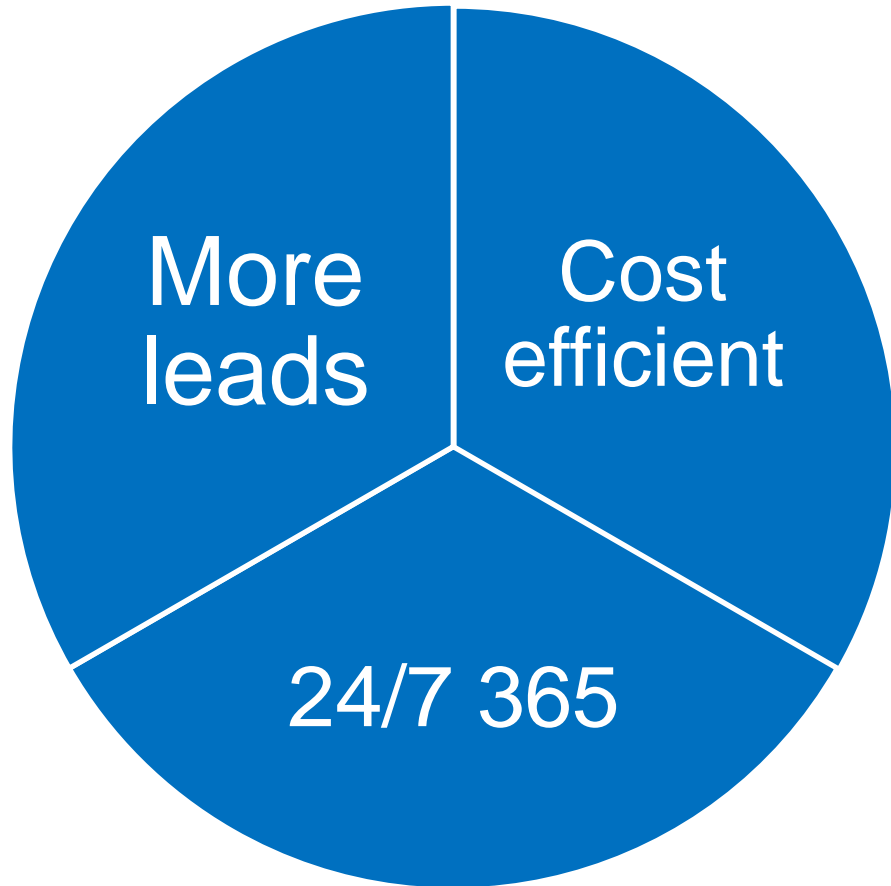
Multiple capabilities

Immediately actionable alerts

Video only in pedestrian spaces



Why stationary LPR?



Murder Arrest x 2 from an ALPR Hot List Alert – Warrants

2 arrested in hotel shooting death of
DeKalb bishop's 50-year-old son

Asa David Seeley (left) and Melissa Ann Washington were charged with malice murder in the Sept. 19 killing of James Morton II.



Addressing Concerns



Communicate
with the
Community!

Concerns:

Privacy Issues

Data Retention

Data Security and
Use

Error Rates

Cost of LPRs

Transparency

Data Sharing

Lack of Control

Legal Issues

- Laws vary state to state
- Consult your attorney
- Implement a strong policy



Questions for vendors:

- Does your LPR take a picture of a vehicle with no license plate?
- Can your LPR reliably determine the state of issue of a license plate?
- How many lanes can your LPR cover?
- Does your software have the ability to turn off alerts on nuisance tags?



Questions for vendors:

- Up to what vehicle speeds does the LPR work reliably?
- How many existing LPRs do you have in this area?
- What nearby agencies could you provide as a reference?
- Could we try out your software without purchasing LPRs?



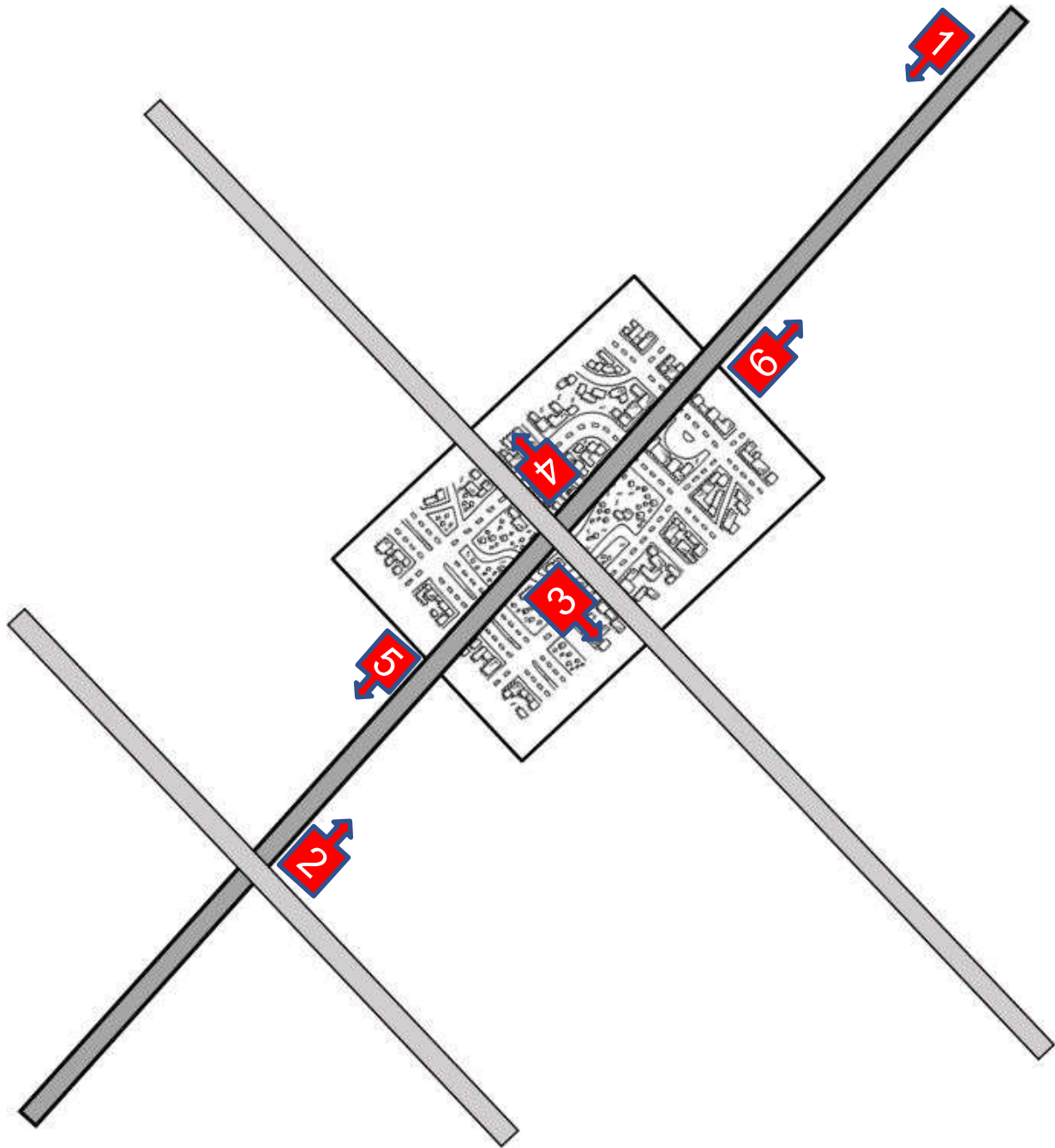
Selecting Locations

Use SARA!

You may want to:

- Cover major routes in and out of your community
- Cover key intersections





COBB COUNTY, Ga. — Over the past two years in Cobb County, Georgia, police have had 62 homicides and solved every single one of them – an unheard of 100% solve rate.

The strongest technology tool the department has? Chief VanHoozer says it's license plate recognition technology.

Source: Fox5atlanta.com



Creating your LPR Policy

- ◆ You must create a comprehensive LPR policy.
- ◆ Should cover who has access and for what purpose
- ◆ Hotlists – How to add, how to respond to alerts and who is responsible for doing audits and enforcing compliance.



Getting ready for Deployment

- + Conduct refresher trainings on your felony stop procedures and your pursuit policy
- + Train everyone and start using the LPR software even before cameras are installed.
 - ✧ Training should cover using the software, how to hotlist vehicles, and handling alerts.
- + Request access to the LPR reads from nearby agencies



Neighboring agency – homicide suspect



Identified!



How to Handle Alerts

Was tag read properly? Both digits and state of issue are critical.

Confirm status by running through NCIC

Then advise over the air before you look for vehicle, so backup is near if you locate

How Not to Handle Alerts

Cops Terrorize Black Family but Blame License Plate Reader for Misidentifying 'Stolen' Vehicle

By Matt Novak | 8/04/20 7:29AM | Comments (86)



- A Police Dept. received Vigilant TAS alert then felony stopped minivan with CO tag
- Actual stolen vehicle – a motorcycle with a MT tag with same digits
- Officers compared LPR image to vehicle, not image to NCIC Hit



Kidnapping of Mateo

Saturday 08/29/20 12:33pm

Mateo is 12 months old, pictured here with Aunt Jessica.

Mother Leslie Barrera fought tooth and nail.



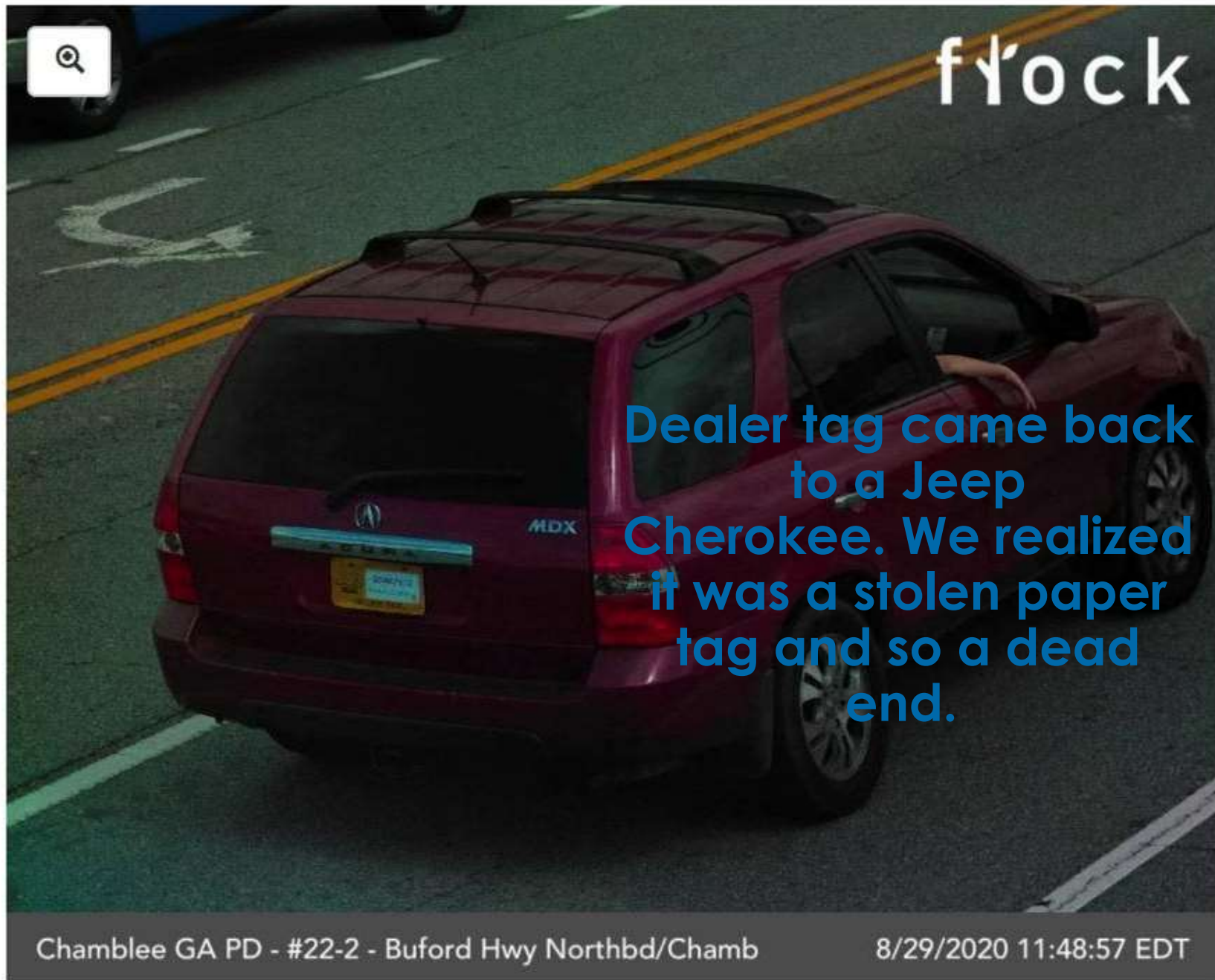
Image from Balfour Apartments surveillance

Vehicle

- License Plate: S0407812 ⚠
- Build: SUV
- Make: Acura
- Color: Red
- First time captured
- [Vehicle summary](#)
- [More like this](#)

[Download Images](#)

[Request More Images](#)



Chamblee GA PD - #22-2 - Buford Hwy Northbd/Chamb

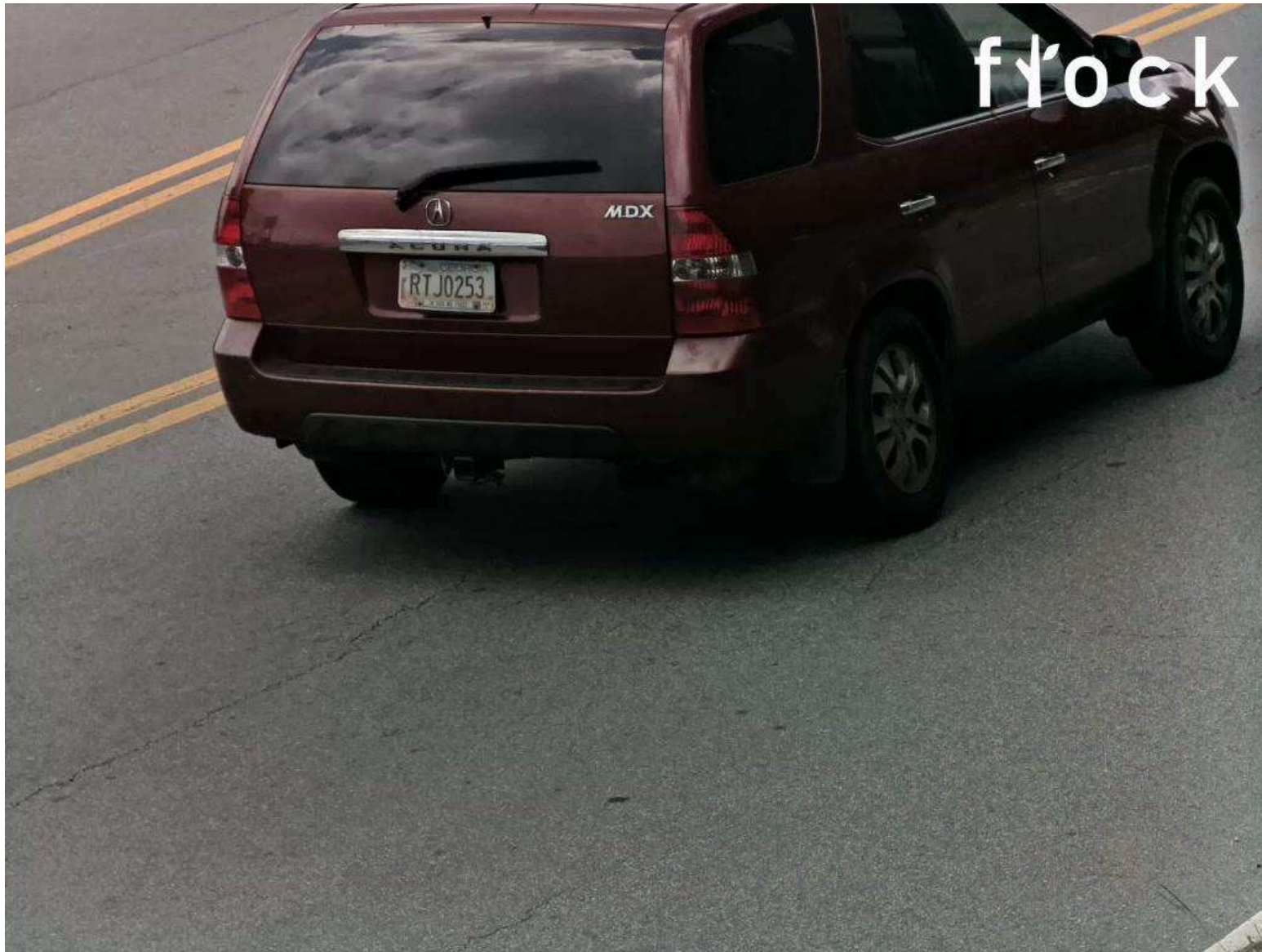
8/29/2020 11:48:57 EDT

flock



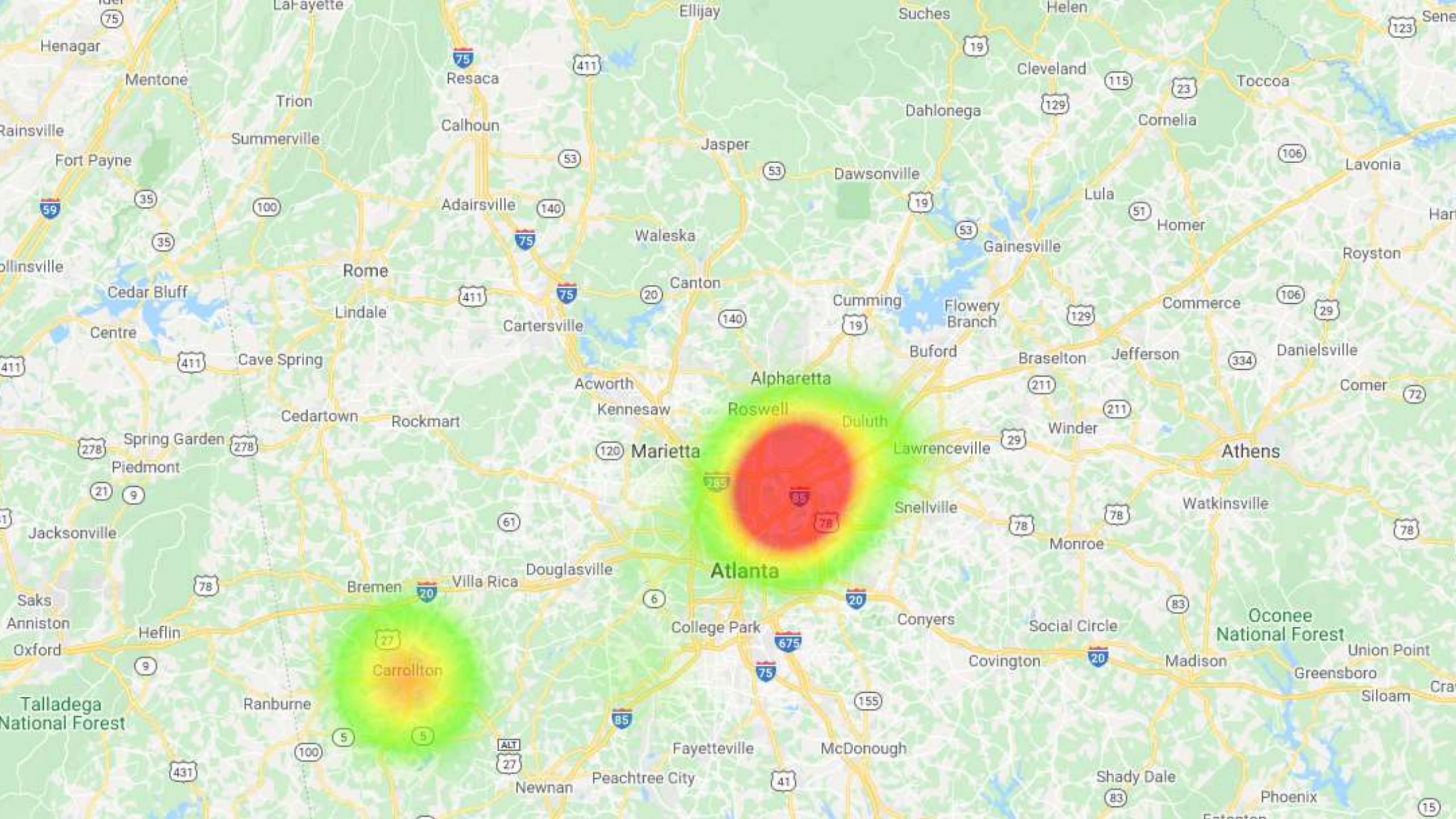
Chamblee GA PD - #26 - Chamblee Tucker Westbound/

8/29/2020 09:17:59 EDT



Cobb County GA PD Z2 - Z215: Six Flags Pkwy/Cityv

8/29/2020 13:00:37 EDT





REXING DASH CAM CHAMB 15 OMI/H 08/29/2020 17:24:55









What if
we
didn't
have
LPR?

What
have
other
agencies
gone
through?

thank you

